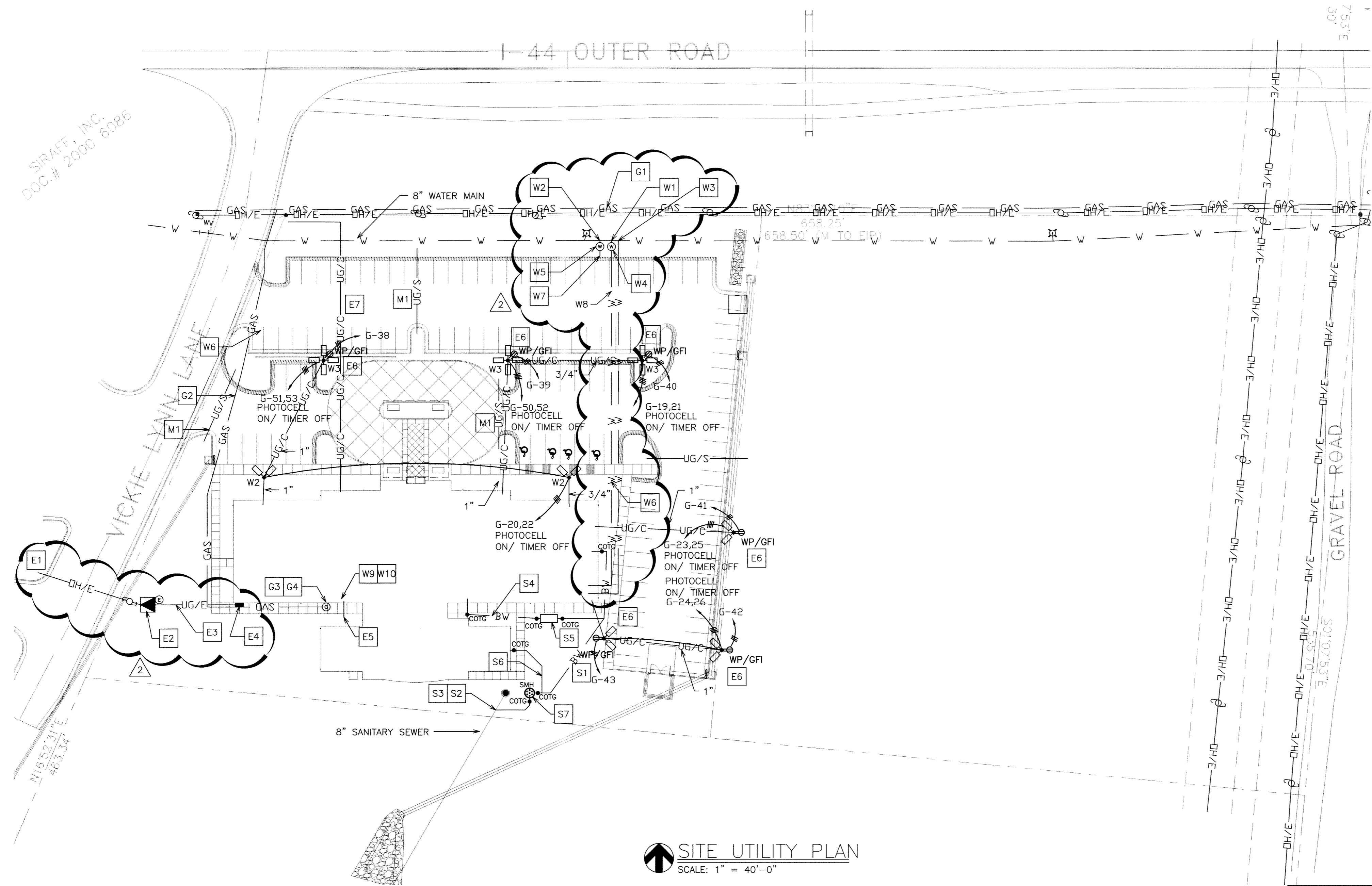


SIRAFF, INC.
DOC. # 2008 6086



SITE UTILITY PLAN
SCALE: 1" = 40'-0"

SITE UTILITY LEGEND

- SS — SANITARY SEWER
- BW — BUILDING WASTE
- W — WATER PIPING
- GAS — GAS PIPING
- UG/E — UNDERGROUND ELECTRIC
- DH/E — OVERHEAD ELECTRIC
- UG/C — UNDERGROUND CONDUIT
- UG/S — UNDERGROUND SLEEVE
- T/C — TELEPHONE/CABLE CONDUIT
- ⊙ — ELECTRIC METER
- ⊙ — GAS METER
- ⊙ — WATER METER
- ⊙ — FIRE HYDRANT
- ▲ — PAD MOUNT TRANSFORMER
- — WEATHERPROOF JUNCTION BOX
- ⊙ — MH — MANHOLE
- — COTG — CLEANOUT TO GRADE
- F.F.E — FINISHED FLOOR ELEVATION
- T.O.M. — TOP OF MANHOLE ELEVATION
- F.L. — FLOWLINE ELEVATION
- 2-WAY C.O. — 2-WAY CLEANOUT

FIELD VERIFY AND COORDINATE ALL UNDERGROUND UTILITIES WITH STORM WATER DETENTION AND DRAIN PIPING TO AVOID CONFLICT/INTERFERENCE.

CAUTION:
INFORMATION ON THIS DRAWING CONCERNING TYPE AND LOCATION OF UNDERGROUND AND OTHER UTILITIES IS NOT GUARANTEED TO BE ACCURATE OR ALL INCLUSIVE. THE CONTRACTOR IS RESPONSIBLE FOR MAKING HIS OWN DETERMINATION AS TO THE TYPE AND LOCATION OF UNDERGROUND AND OTHER UTILITIES AS MAY BE NECESSARY TO AVOID DAMAGE THERETO.



#	KEYNOTES
COMMUNICATIONS (DATA, TELEPHONE, CABLE TV, ETC.)	
G1	ROUTE (2) 4" PVC CONDUITS WITH PULL WIRE FROM UTILITY EASEMENT TO LOCATION OF TELEPHONE BOARD (SEE ELECTRICAL PLANS) FOR COMMUNICATIONS. TURN UP AND WEATHERPROOF BOTH ENDS.
ELECTRIC	
E1	POINT OF CONNECTION TO ELECTRICAL SERVICE. OVERHEAD ELECTRIC EXTENDED OVER STREET TO POLE DROP THEN UNDERGROUND TO PAD MOUNT TRANSFORMER. FIELD VERIFY.
E2	PAD MOUNT TRANSFORMER WITH METER AND CT ON THE TRANSFORMER CABINET.
E3	UNDERGROUND SECONDARY TO BUILDING.
E4	MAIN DISCONNECT ON BUILDING EXTERIOR IN NEMA 3R ENCLOSURE.
E5	1" CONDUIT OUT OF MECHANICAL ROOM FOR IRRIGATION CONTROL.
E6	WEATHERPROOF GFI RECEPTACLE NEAR THE BASE OF THE LIGHT POLE (SEE LIGHTING FIXTURE SCHEDULE). CIRCUIT TO BE TIMER CONTROLLED.
E7	(3) 1-1/2" UNDERGROUND CONDUITS FOR SIGN POWER, CONTROL, ETC.
GAS	
G1	POINT OF CONNECTION TO GAS MAIN. FIELD VERIFY.
G2	GAS PIPING TO BUILDING.
G3	LOCATION OF GAS METER WITH SHUT-OFF VALVE AND REGULATOR SET AT 7" W.C.
G4	THE TOTAL GAS LOAD IS APPROXIMATELY 1,406,000 BTUH.
MISCELLANEOUS	
M1	4" PVC SLEEVE WITH PULL WIRE UNDER DRIVE. TURN UP AND WEATHERPROOF BOTH ENDS.
SEWER	
S1	6" BUILDING WASTE LINE AT 1/4" PER 1' SLOPE WITH CLEANOUT TO GRADE WITHIN 5' OF THE BUILDING AND EVERY 100' THEREAFTER AND AT EVERY HORIZONTAL CHANGE OF DIRECTION GREATER THAN 45'.
S2	POINT OF CONNECTION TO SANITARY SEWER. FIELD VERIFY.
S3	THE TOTAL DRAIN FIXTURE UNITS IS APPROXIMATELY 800.
S4	3" WASTE LINE FROM KITCHEN TO GREASE INTERCEPTOR.
S5	1,000 GALLON GREASE INTERCEPTOR.
S6	6" POOL WASTE.
S7	SAMPLING MANHOLE.
WATER	
W1	POINT OF CONNECTION TO WATER MAIN FOR 4" DOMESTIC WATER SERVICE. FIELD VERIFY.
W2	POINT OF CONNECTION TO WATER MAIN FOR LAWN IRRIGATION. 1" TAP.
W3	POINT OF CONNECTION TO WATER MAIN FOR FIRE SPRINKLER SERVICE. FIELD VERIFY. THE SIZE OF SERVICE WILL BE DETERMINED BY THE SPRINKLER SYSTEM DESIGNER.
W4	LOCATION OF 4" METER FOR DOMESTIC WATER SERVICE.
W5	LOCATION OF METER FOR LAWN IRRIGATION.
W6	3" WATER LINE TO BUILDING FOR DOMESTIC WATER SERVICE (REDUCE FROM 4" TO 3" IMMEDIATELY AFTER WATER METER).
W7	1" WATER LINE LAWN IRRIGATION.
W8	WATER LINE TO BUILDING FOR FIRE SPRINKLER. THE SIZE OF THE LINE WILL BE DETERMINED BY THE SPRINKLER SYSTEM DESIGNER.
W9	MAIN SHUT-OFF FOR DOMESTIC WATER NEAR THIS LOCATION.
W10	THE TOTAL SUPPLY FIXTURE UNITS IS APPROXIMATELY 800.

CROCKER CONSULTING ENGINEERS HAS PROVIDED ONLY MECHANICAL, ELECTRICAL, AND PLUMBING ENGINEERING SERVICES. FLOOR PLANS AND SITE PLANS HAVE BEEN PROVIDED BY THE ARCHITECT FOR OUR USE RELATIVE TO MECHANICAL, ELECTRICAL, AND PLUMBING ENGINEERING SERVICES ONLY.

REVISIONS	BY
2008-09-30	PDC
2008-11-04	PDC



CROCKER CONSULTING ENGINEERS, INC.
REGISTERED PROFESSIONAL ENGINEERS
3211 East Shady Glen Springfield Missouri 65804-4794
TEL: (417)863-4056 FAX: (417)863-4057
www.crockerengineers.com
CERTIFICATE NUMBER: 2008000470
LICENSED PROFESSIONAL ENGINEER PATRICK D. CROCKER
LICENSE NUMBER E-18052

**JBB HOSPITALITY, INC.::
HOLIDAY INN EXPRESS
HOTEL & SUITES**
ST. ROBERT MISSOURI

DRAWN: RGO, EAA, JDS
CHECKED: PDC
DATE: 07/14/08
JOB NUMBER: 2008-006
CLIENT
JOB NUMBER: 07-153
SHEET:
SU1

© 2008 THESE DRAWINGS ARE INSTRUMENTS OF SERVICE. THE ENGINEER HAS BEEN ADVISED OF THE NATURE OF THESE INSTRUMENTS AND SHALL BE RESPONSIBLE FOR ANY VIOLATIONS OF ANY APPLICABLE LAW, STATUTE, OR OTHER REQUIREMENT. THE ENGINEER'S DRAWINGS SHALL NOT BE USED ON OTHER PROJECTS, FOR ADDITIONS TO THIS PROJECT OR FOR COMPLETION OF THIS PROJECT BY OTHERS, EXCEPT BY AGREEMENT IN WRITING WITH THE ENGINEER.