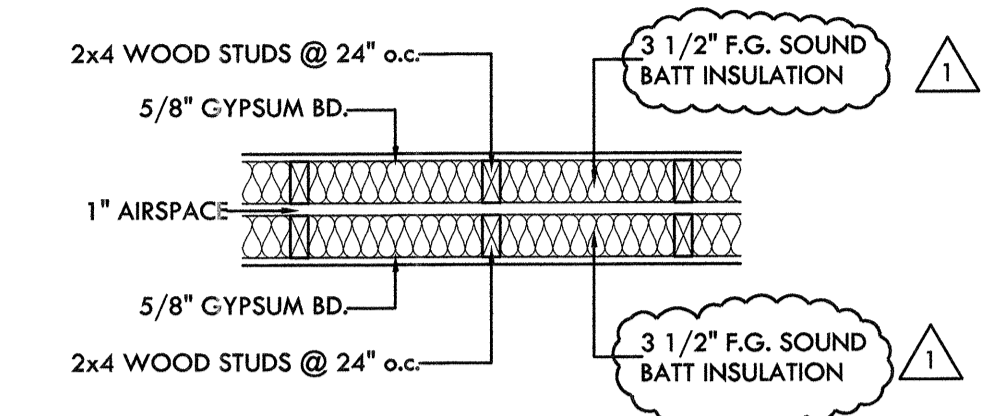
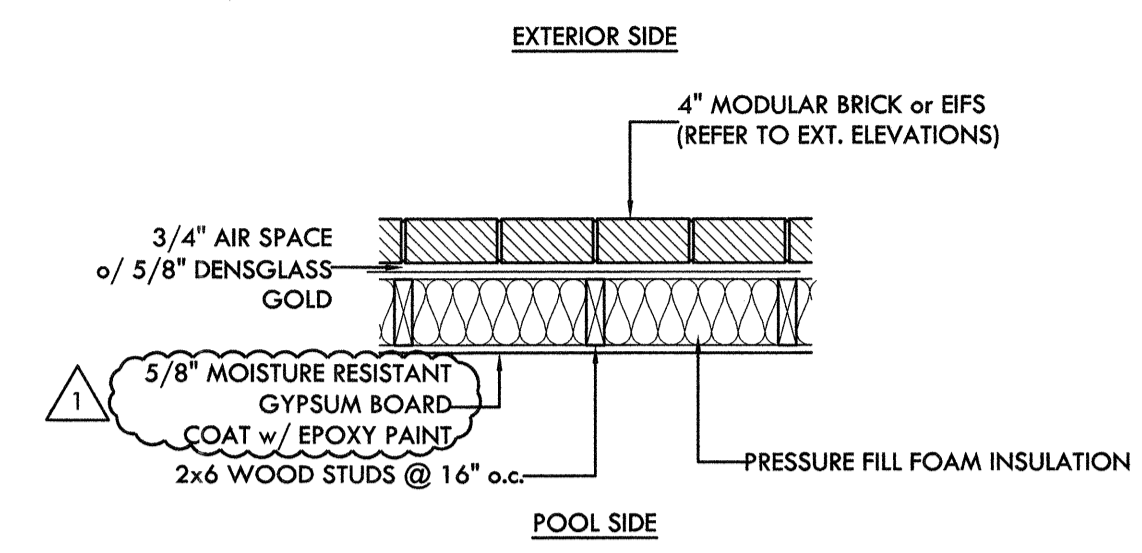
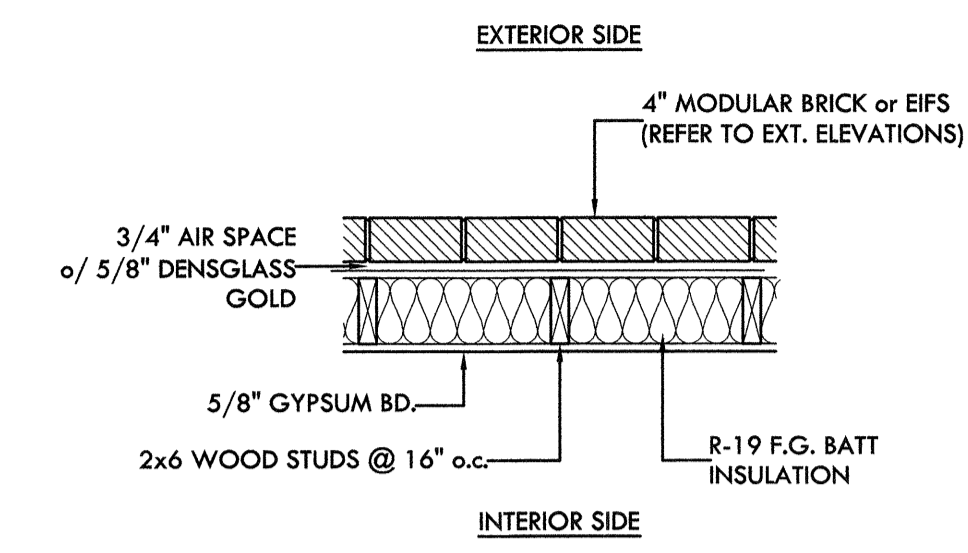


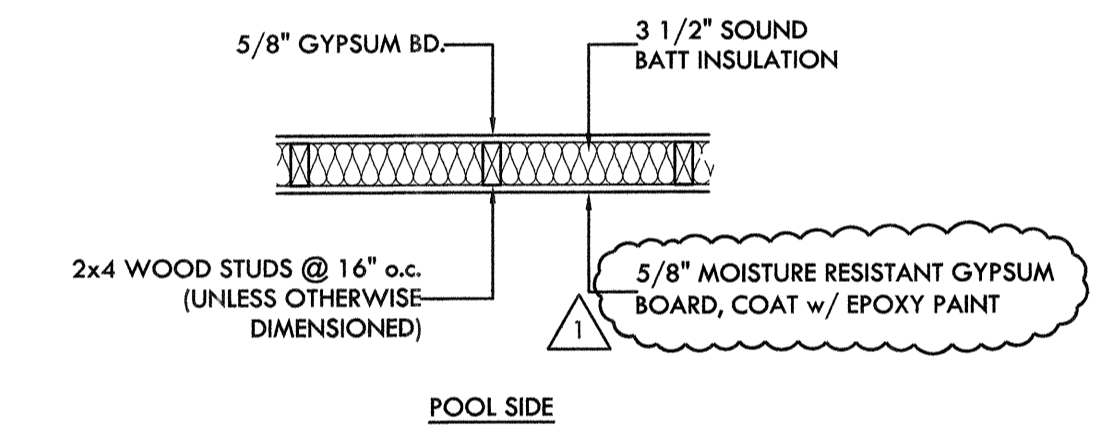
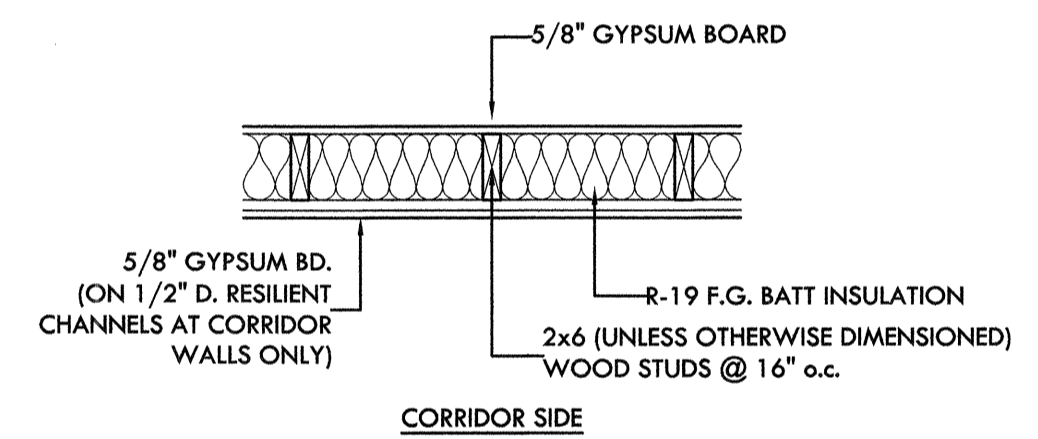
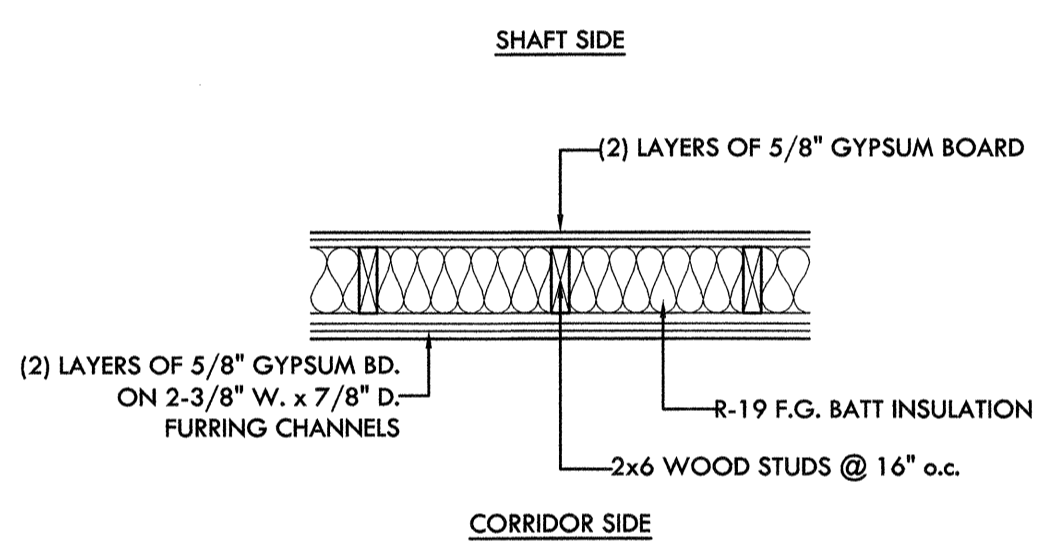
- WALL DETAIL NOTES:**
- GENERAL CONTRACTOR TO REFER TO RATED ASSEMBLIES AS NOTED. GENERAL CONTRACTOR TO REPORT ANY DISCREPANCIES TO ARCHITECT PRIOR TO PROCEEDING w/ WORK.
  - ALL PENETRATIONS THROUGH FIRE-RATED ASSEMBLIES MUST BE CONSTRUCTED & INSTALLED TO MAINTAIN INTEGRITY OF THE FIRE-RATED ASSEMBLY.
  - ALL STRUCTURAL COLUMNS & BEAMS SHALL BE WRAPPED IN A MINIMUM (2) LAYERS OF 5/8" GYPSUM BOARD TO ENSURE A 1-HOUR FIRE-RATED PROTECTION, WHETHER OR NOT SHOWN ON PLANS. RATING BASE ON IBC TABLE 721.6.2(1).



**1 TYPICAL EXTERIOR WALL** SIMILAR TO UL #U337  
SCALE: 3/4" = 1'-0"

**2 TYPICAL EXTERIOR WALL AT POOL** SIMILAR TO UL #U337  
SCALE: 3/4" = 1'-0"

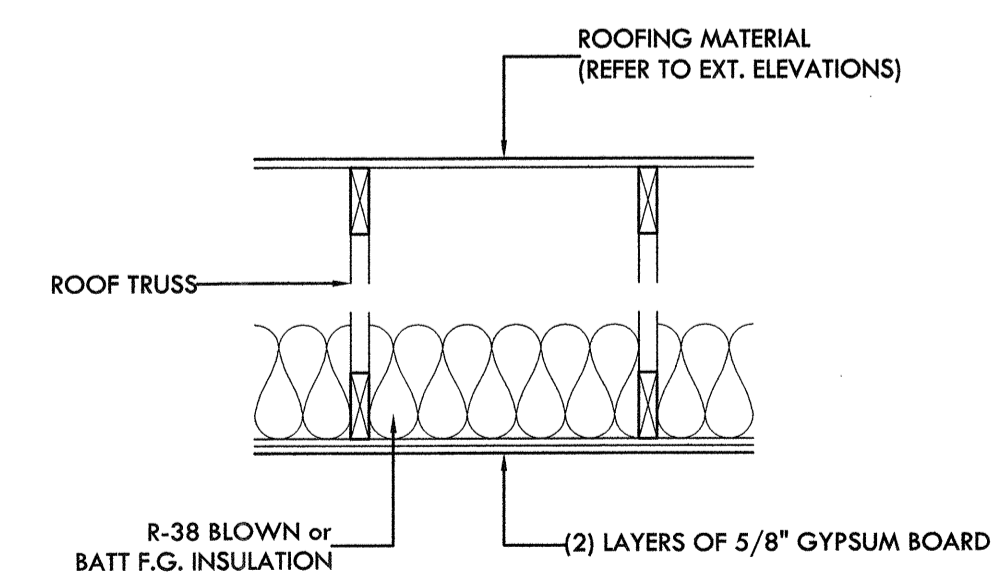
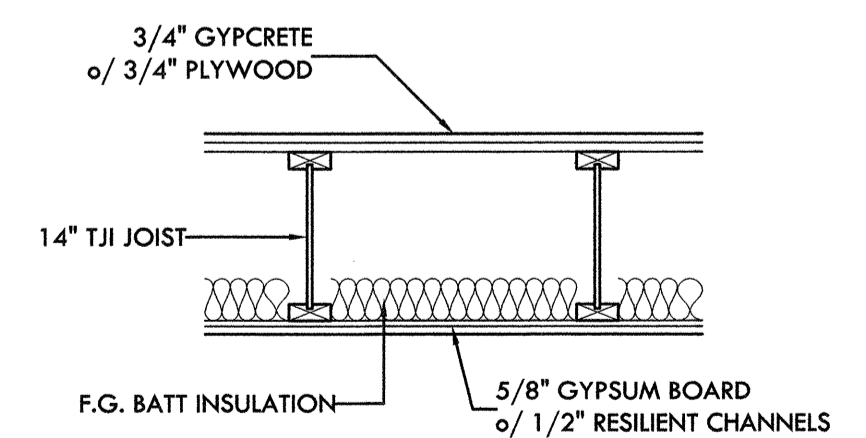
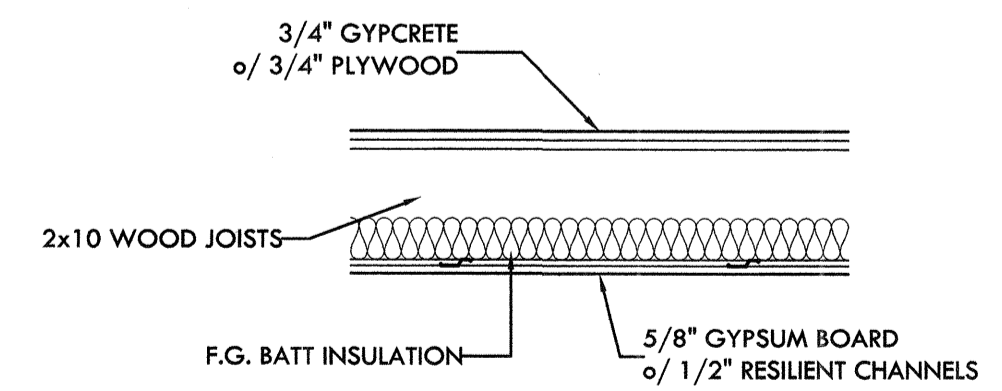
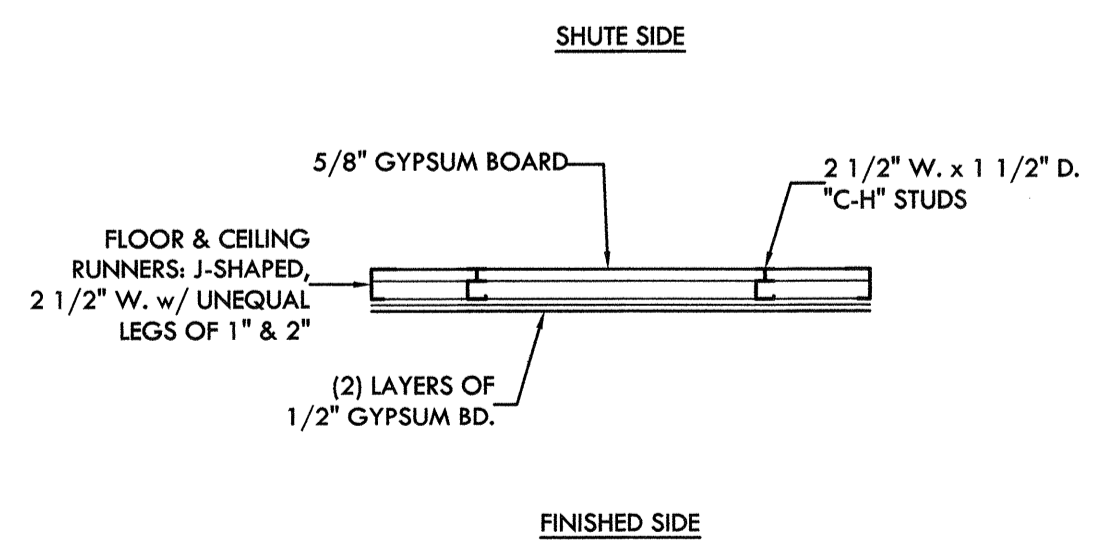
**3 TYPICAL PARTY WALL** SIMILAR TO UL #U341  
SCALE: 3/4" = 1'-0"



**4 TYPICAL WALL AT ELEVATOR SHAFT** SIMILAR TO UL #U334  
SCALE: 3/4" = 1'-0"

**5 TYPICAL INTERIOR PARTITION** SIMILAR TO UL #U305 (#U311 AT CORRIDORS)  
SCALE: 3/4" = 1'-0"

**6 TYPICAL INT. PARTITION AT POOL** SIMILAR TO UL #U356  
SCALE: 3/4" = 1'-0"



**7 TYP. LINEN/EXHAUST SHUTE** REFER TO UL #U438  
SCALE: 3/4" = 1'-0"

**8 FLOOR/CEILING** SIMILAR TO UL #L514  
SCALE: 3/4" = 1'-0"

**8 FLOOR/CEILING** REF. TO NATIONAL EVALUATION SERVICE, INC. REPORT NO. NER-200, ASSEMBLY "F"  
SCALE: 3/4" = 1'-0"

**9 ROOF/CEILING** REFER TO GA FILE NO. RC2601  
SCALE: 3/4" = 1'-0"

MARK	REVISION DATE	DESCRIPTION
△	09-30-08	REVISED WALL DETAILS

ARCHITECT

**SLONE ARCHITECTS**  
PLANNERS, AIA

BUILDING "J", SUITE 100  
1200 EAST WOODHURST DRIVE  
SPRINGFIELD, MISSOURI 65804  
PH (417) 887-4575 FAX (417) 887-5060  
www.slonearchitects.com

ENGINEER SEAL

**JBB HOSPITALITY, INC.:**  
**HOLIDAY INN EXPRESS**  
**HOTEL & SUITES**  
**ST. ROBERT · MISSOURI**

The Drawings, Specifications and other documents prepared by the Architect for the Project are instruments of the Architect's service for use solely with respect to this Project and, unless otherwise provided, the Architect shall be deemed the author of these documents and shall retain all common law, statutory & other reserved rights, including the copyright, in the Architect's Drawings. Specifications or other documents shall not be used by the Owner or others on other projects, for additions to this Project or for completion of this Project by others, except by agreement in writing and with appropriate compensation to the Architect.	JOB NO. 07-153	SHEET A3.3
	DATE 07-14-08	OF 4 SHEETS